



**St Mary's**  
Catholic Primary School and Nursery

**Returning to School Information for Parents with pupils in EYFS**

**Autumn 2020**

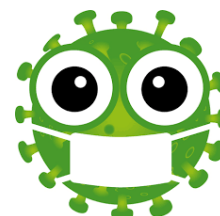
**Infection Control**

- Best possible hygiene practices will be in place for everyone in school
- High standards in hand hygiene for everyone will be a key factor in keeping everyone safe
- Pupils and staff will be washing their hands on entering the building, before and after eating and at given points throughout the day
- Staff will be washing their hands after handling pupil books/ resources
- Good levels of personal hygiene will need to be observed by all pupils i.e. toilets, flushing, handwashing, cleanliness
- Cleaning regimes and patterns will change including frequently touched surfaces, equipment, door handles, toilets
- Soap and water will be available
- Staff will be observing 'social distancing' including lunch and break times
- Soft furnishings and soft toys have been removed from the working environment
- We will be unable to;
  - *sing*
  - *have assembly*
  - *access the trim trail or the wooden play houses on KS1 playground*
  - *share many of our resources*
  - *gather other than with the children in the designated 'bubble'*



**Track & Trace**

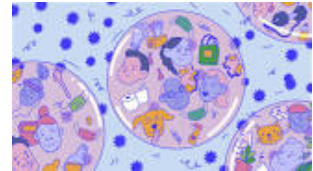
- If your child displays any of the known COVID 19 symptoms they must not attend school and you must inform us of the outcome of any positive test to enable us to instruct the remaining members of the bubble to isolate for 14 days.
- Home Learning materials will be available for pupils who are required to self-isolate



**Class Management**

- Movement around the school will be limited and in some cases one-way.

- Pupils will be asked to follow markings on the floor to stay away from each other in the style familiar now in supermarkets and shops.
- Pupils will rarely be lining up; they will be using floor markings to keep safe distances from each other and will need to move slowly between spaces
- To minimise contact between pupils, pupils will remain together in designated 'bubbles' – small consistent groups
- There will be clear systems in operation around the school if anyone from the 'bubble' group needs to move from their base
- Playtimes and lunchtimes will be taken in the designated limited bubble group – there will be no contact or coming together with any other pupils and breaks and lunch times maybe at different times for us to be able to achieve this
- Bubbles will have designated play zones which they will have to stay in
- Pupils will have the opportunity to learn outside, weather permitting!
- All pupils will be expected to fully comply with all our guidelines and behaviour expectations. If they are unable to do so and therefore risk the health, safety and well-being of others, parents will be contacted and asked to collect them. If pupils cannot abide by the rules, nobody is safe.
- We will continue to use the class-dojos system to award behaviour points and for you to message and receive messages from class teachers (during school hours).
- Tapestry Learning Journals will be used to set homework tasks, upload observations of learning and record reading at home.
- A Home-School behaviour agreement will be issued if we have concerns



## Snacks & Lunch

- All lunches will be packed lunches for all pupils for the foreseeable future.
- Lunches will be eaten in class/ bubble bases.
- If in receipt of Free School Meals, your child will be provided with a packed lunch
- If your child is bringing their own packed lunch from home, please ensure all cartons and utensils are disposable or re-usable, and your child is able to open and access all the wrapping and seals without the need for adult help
- Lunchboxes will need to be washed in hot soapy water every night
- Pupils will need 1 additional snack – again that they can open themselves and are in disposable wrapping that does not require adult help (we will update you if when fruit becomes available again).
- Pupils will need to bring their own individual named water bottle – washed thoroughly and re-filled with fresh water daily
- Pupils will be offered milk to drink



## PE

- PE equipment will be washed and assigned to the bubble.
- All PE activities will be undertaken at a safe distance from others



## Trips & Visits

- Trips and visits can take place alongside stringent risk assessments

## Parents & Carers on Site

- Times of arrival and departure to school have been extended to minimise contact with other pupils and stop adults gathering on site.
- There will be designated entry and exit points for drop off and collection
- Please follow the designated route for your child's class
- One parent/ adult only to bring and collect
- 'Drop and go' system in operation – parents/ carers will not be permitted to stay or gather on site
- All conversations with staff will need to be pre-arranged/ pre-booked and need to be by phone or email. We must limit face to face interaction wherever possible
- No direct cash payments
- The Admin area of school is closed to visitors until further notice. Contact is to be made by telephone or email



## Pupils

- Pupils will be expected to observe 'catch it, bin, it, kill it' routines with tissues, which will be available in all areas
- Pupils will be expected to follow the rules and expectations
- Pupils will be encouraged to help staff in the end of day clean-down of surfaces i.e. toys and tables
- Pupils must avoid touching their eyes, nose and mouth as these are the mucus areas where the virus attaches
- Pupils are expected to wear their full school uniform from September.
- Every item of clothing must be washed regularly to limit the virus being transferred from school to home and from home to school.
- Pupils need to bring their book bag daily (no backpacks)
- **Pupils in EYFS do not need their own named bottle of hand sanitiser for their desk however if you would like to donate an unopened bottle for class use this would be appreciated**
- Computing resources will be sanitised between use
- Resources that are not easily washable or wipe able will be limited or removed

