



St Mary's
Catholic Primary School and Nursery

RELATIONSHIPS AND HEALTH EDUCATION

CURRICULUM AIMS

At St Mary's we shape our curriculum so that all pupils are provided with high quality teaching and learning, with Jesus Christ at the centre of all we do. We aim to teach pupils how to grow into positive, responsible citizens, who can work and co-operate with others while developing the knowledge and skills to achieve their true potential.

"The Christian life is a call to a deeper communion with God and with one another, and this finds particular expression in our schools, which are rightly recognised as being families themselves, where no one is a stranger and where everyone, whatever his or her background or academic ability, is welcomed, treasured, supported and helped to become the person whom God calls them to be."

Bishop Malcolm MacMahon.

We aim to provide a Catholic Christian education based on the life and teaching of Jesus Christ, in which the values of the Gospel underpin all aspects of school life;

To provide a friendly, nurturing environment in which the dignity of each person as a child of God is recognised and developed; and to promote the full potential of each child through a curriculum which develops spiritual, academic, creative, social and emotional growth;

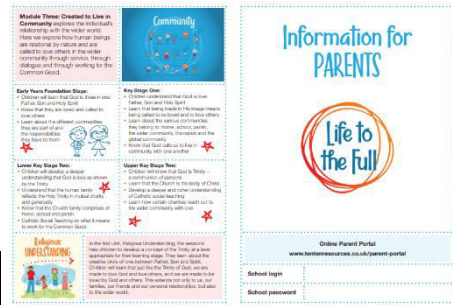
To provide a curriculum which is enriching and challenging, where pupils experience the opportunity to learn in a wide range of contexts.

INTENT



From September 2020 RHE (Relationships and Health Education) became compulsory in all Primary schools. As a Catholic school, our mission at St Mary's is to support the spiritual, moral, social and cultural development of all of our pupils, rooted in the wisdom and teaching of the Church. The education of children in human sexuality is an important, precious and privileged responsibility.

The Church teaches us that this is very much a partnership with parents, in which parents are the 'first educators' of their children on these matters. St Mary's delivers the Relationships Health Education (RHE) Curriculum through the Ten Ten's program in Relationship Education for Catholic primary schools, Life to the Full.



IMPLEMENTATION



Before we began to implement the Ten Ten program parents were invited to view the content, resources and to take part in the consultation. They were given the opportunity to raise any concerns and also seek clarification of any aspects within the program. Parents are invited to view the Ten Ten program at any time and can access the parental portal by using the following information.

Online Parent Portal

This resource is be available to view for parents/carers via an online parent portal:

portal: <https://www.tentenresources.co.uk/parent-portal/>

You will need the following login credentials for our school in order to explore the resources:

Username: st-mary-cw2

Password: mother-dane

The Ten Ten program goes beyond simply producing a series of lesson plans; instead, it has created an entire platform of creative resources that engage, inform and inspire children, parents and staff. It includes interactive video content, story-based activities and original worship music, all whilst employing a wide range of teaching tools and an accompanying programme of classroom prayers.

In Life to the Full, we follow a four-stage structure which is repeated and developed across four different learning stages:

- Early Years Foundation Stage is aimed at Preschool and Reception
- Key Stage One is aimed at Years 1 and 2
- Lower Key Stage Two is aimed at Years 3 and 4
- Upper Key Stage Two is aimed at Years 5 and 6

Within each learning stage, there are three Modules which are based on the Model Catholic RHE Curriculum:

- Created and Loved by God
- Created to Love Others
- Created to Live in Community

Each Module is then broken down into Units of Work.

Module 1	Created and Loved by God
Units	Religious Understanding Me, My Body, My Health Emotional Well-being Life Cycles
Module 2	Created to Love Others
Units	Religious Understanding Personal Relationships Keeping Safe
Module 3	Created to Live in Community
Units	Religious Understanding Living in the Wider World

Within each Unit there are a number of planned sessions which are to be led in the classroom.

INCLUSION

All children receive Quality First Teaching. Any children with identified SEND or in receipt of pupil premium funding may have work additional to and different from their peers in order to access the curriculum dependent upon their needs. In addition, our school offers a vibrant, demanding and varied curriculum, providing all our pupils with a range of opportunities in order for them to reach their full potential, enjoy and achieve regardless of their starting points. The Ten Ten scheme also contains guidance for SEND differentiation and this can be found at the bottom of all Session Notes, these notes highlight content from the session to be aware of and think about in a different way, key points to ensure understanding, and suggestions on how to offer options and so increase accessibility. There are also Extended Activities for each individual lesson that can also be found on the lesson page of every resource.

IMPACT

Each Unit of work also has an Assessment Activity associated with it. This allows teachers to assess whether the outcomes of the programme are being achieved, and also to demonstrate evidence of this. As Relationship Education is statutory, thorough evidence of assessment has become even more important. Ten Ten has an assessment activity for each Unit of sessions. The activities consider the Learning Objectives of the sessions within the unit and provide before and after evidence that learning has taken place.