

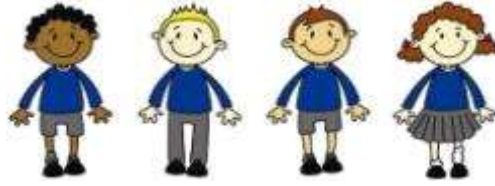
# Welcome to Reception

## New intake September 2025

### St. Mary's Catholic Primary School



St Mary's  
Catholic Primary School and Nursery



Our School Mission Motto:



St Mary's  
Catholic Primary School and Nursery

“Working Together Through  
Faith and Education”

Dear Lord,  
Bless all the children and staff in our school. May we work together to learn valuable lessons.  
Bless all our loving parents, our school community and parishioners.  
We thank you for our kind friends and hardworking teachers.  
Let us follow the shining example of Mary, who showed faith, courage and obedience.  
Help us to be the best that we can be and guide us as we stay connected to you and Jesus in all that we do.  
As a school, we learn and grow with God by our side.  
Amen.





**In March 2023 we received an  
OUTSTANDING Denominational  
Inspection outcome for  
Catholic Life and Mission,  
Religious Education and  
Collective Worship**



# Outstanding Denominational Inspection March 2023

*For the full report- see the school's website*



# June 2023

Officially  
rated **'Good'**  
in all areas  
by Ofsted



Quality of Education

Behaviour and Attitudes

Personal Development

Leadership &  
Management

# Working Together Through Faith and Education

Our Catholic faith is experienced and reflected in the way in which all members of our community treat each other. We place great importance on relationships and positive behaviour, encouraging respect, co-operation and consideration.

**Our Core Values are**

- **Spirituality**
- **Creativity**
- **Co-operation**
- **Tolerance**
- **Independence**





# Meet the Team!

Head Teacher- Mrs Wright  
Deputy Head- Mrs Messenger



## Reception Class 1

Miss Noyce (Class teacher & Team Leader) –

Mrs Russell (TA)

Ms Molloy (Welfare Assistant)



## Reception Class 2

Mrs Hassall (Class Teacher)– Monday

Mrs Cosby (Class teacher) – Tuesday to Friday

Mrs Holman/ Mrs Dwyer(TAs)

Ms McGuinness (Welfare Assistant)





# Stay And Play

3.30pm- 4.30pm

**Tuesday 8th July 2025**

**Wednesday 9th July 2025**

An opportunity for you and your child to:

- Explore your new classroom
- Explore the excellent outdoor area
  - Meet your teacher
  - Meet new friends

Please speak to your child's new class teacher or the school office to confirm when you will be attending.



# Settling into school

## Transition Visits

**Wednesday 3rd, Thursday 4<sup>th</sup> and Friday 5<sup>th</sup> September 2025**

Children who attended St Mary's Nursery **9am-11am**

Children who attended other Nurseries and Childminders **1pm-3pm**

All children start full time on **Monday 8<sup>th</sup> September 2025**

# Normal School Times

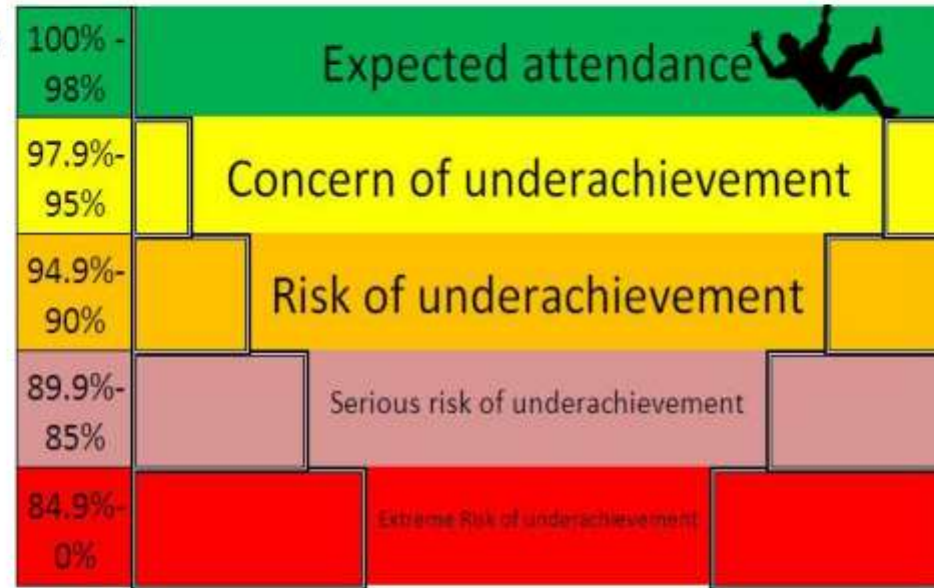
- Gates open from **8:45am** from Dane Bank Avenue
- Classroom Doors close at **9am**
- Collection at **3:10pm**

Late arrivals and pick ups go to main office.



# Attendance and Punctuality

Attend school every day unless ill. Be punctual at the beginning and end of the school day.



You must inform the school office if your child is poorly and not attending school before 9am.

# Holidays During Term Time

Taking a holiday during term time is disruptive and will not be authorised except in *exceptional* circumstances. It is a legal requirement to discuss such a decision and seek permission from the Head Teacher. A leave from learning form, which is available from the school office or from our website, must be completed for all requests.

## **There are two types of Fixed Penalty Notices:**

1. Issued for persistent poor attendance - for unsatisfactory attendance where no improvement has been made despite appropriate intervention and only made following a referral to Attendance and Children out of School Service.
2. Issued for Holidays in term time- implemented following legislation

## **Holiday Fixed Penalty notices are Issued when:**

An unauthorised holiday of 10 sessions (5 days) or more is taken in any academic year. This can be non-consecutive days too.

The holiday request was denied as it was not exceptional, or not requested in writing.



# Behaviour at St. Mary's

We pride ourselves with high standards of behaviour, manners and respect.

Autumn- settling in, setting expectations and creating a whole class ethos and culture.

We will celebrate children's good behaviour and acts of kindness and helpfulness – stickers, dojo points, good to be green and the prestigious Blue Cards award. It is very rare we have to issue yellow or red cards for inappropriate behaviour. We will always communicate behaviour with you.

We will use our Catholic values to encourage and show examples of good behaviour.

Our Behaviour policy is available on school website.



# Toilet Training

Toilet training is an important milestone.

It promotes independence and confidence for your child

## **What does 'toilet trained' mean?**

That your child can independently use the toilet

Your child recognises their body's signal that they need the toilet



## **Age- appropriate Expectations**

While every child is unique, most children show readiness signs between the age of 2 and 3

By the time your child starts Reception, they should have a good understanding of the toilet process

Some children may still need the occasional reminder or assistance

## **Developing good toileting habits**

Encourage toilet routines at home- sitting on the potty or toilet

Promote washing hands

Teach proper wiping techniques and the importance of flushing

## **Home and School Communication**

Please let your child's teacher know about your child's progress

Share any concerns or specific needs your child may have

## **Early Learning Goal- Managing Self**

By the end of Reception children meeting the Early Learning Goal can 'manage their own basic hygiene and personal needs, including dressing, going to the toilet and understanding the importance of healthy food choices.'

We need your help to achieve this!

# Statutory Reception Baseline Assessments

Short, interactive and practical assessment of your child's early literacy, communication, language and mathematics skills when they begin school.



Your child cannot 'pass' or 'fail' the assessment.

Its main purpose is to create a starting point to measure the progress schools make with their pupils.

They won't even be aware they are doing them!

# Early Years Foundation Stage Curriculum (EYFS)

## 3 Prime Areas-

Communication and Language

Personal Social and Emotional Development

Physical Development

## 4 Specific Areas of Learning –

Literacy

Mathematics

Understanding the World

Expressive Arts and Design



**17 Early Learning Goals** – most children will reach these by the end of the reception year but some will not.

# What will it be like in Reception?

Making new friends and learning to share and turn take.

Fine motor skill development – muscles in fingers for writing.

Play, play and more play- discovering and exploring the world around them both inside and out.



Daily phonics and Maths teaching input.

Daily rhyme and story time.

Singing and dancing.

Paint, playdough, glue, scissors, mud, sand and water!

Weekly RE lessons.

Weekly PE lessons.

Weekly Forest School sessions and Outdoor Learning sessions.

Reading three times a week from late Autumn term.





## Learning Can Be Messy

Playing outside is so important. I run and jump and get lots of fresh air. Sometimes I might get grass or mud on my clothes.



Using a knife and fork at lunchtime is tricky! Sometimes I get food on my clothes!

I sometimes get pen and paint on my clothes! This is because I am developing creative skills and exploring lots of different ways of making amazing art!



Our mud kitchen is so much fun! I use all my senses, which is so important for my development. It also helps me use my imagination and practise playing with my friends nicely!

Exploring in the water tray is giving me lots of maths and scientific skills! I love pouring, filling and emptying! I usually wear an apron but sometimes my clothes get wet!



twinkl  
visit [twinkl.com](https://www.twinkl.com)

Exploring with playdough and other messy play resources like foam or food, helps me to develop fine motor control and build up muscles and coordination in my hands and fingers. I will need these when I learn to write.



When I get messy, I have been showing curiosity, determination, persistence, imagination and confidence!

**Your child will need a puddle suit and their wellies in school all week, every week... Reception is messy!**





# Forest School & Outdoor Learning

- Every Wednesday
- Come to school wearing winter PE kit- black/navy jogging bottoms, plain black/navy sweatshirt or hoody (NO LOGOS), and trainers.

## **Bring to school:**

- a pair of wellies and a waterproof puddle suit or waterproof trousers and a coat (to be kept in school)
  - Hat and gloves
- Spare clothes including jogging bottoms and SOCKS to change into if become wet and muddy.

## **Summer:**

- Come to school in summer PE kits- red pe T-shirt and navy shorts. Bring a pair of spare thin long trousers to change into.



# Little Wandle Letters and Sounds



Phonics teaching begins as soon as children start Reception.

Daily lessons involve teaching children to read and write.

In the Autumn term 2025 we aim to hold a parent information session in school on the importance of phonics, to help with early reading and writing.

*Date will be confirmed in due course.*



# Reading

## Key important skill...

Library books are issued every Monday and Thursday.

Please provide a bookbag so that your child is able to keep their books safe.



Please share books with your child daily and record this in their reading diary.

Every child will receive log in details for the Collins e-library.

**Collins** ebooks

These books are electronic versions of the books we read in school and that your child will bring home in a phonics folder. They are closely linked to your child's phonic knowledge.



# Parental Involvement

We want you to be actively involved with your child's Reception Year!

You are your child's first educator and know them best.

How can you help?

Please share with us anything you have done at home that means something to your child and we will share and celebrate it at school via our dojo!



Read to your child and share lots of stories.

Listen to your child read when they are ready.

Help your child to complete homework.

Most importantly ensure your child has a good bedtime routine, a good night's sleep and a healthy breakfast before school.

Volunteers are really welcome!





# School Uniform

- Full uniform and ties
- Black Shoes (no trainers)
- PE Uniform
- Jewellery
- Purchase through our online store or at Windsor Shoe Store, Crewe and the link can be found on the school website



**Telephone 01743 440449**

**e-mail [info@schoolshopdirect.co.uk](mailto:info@schoolshopdirect.co.uk)**

**[www.schoolshopdirect.co.uk](http://www.schoolshopdirect.co.uk)**

# Housekeeping

**Label everything!!!** Even underwear, shoes and socks! Bring a change of clothing in case of accidents.

Provide a **named** water bottle & book bag every day.



Wear weather appropriate coats.

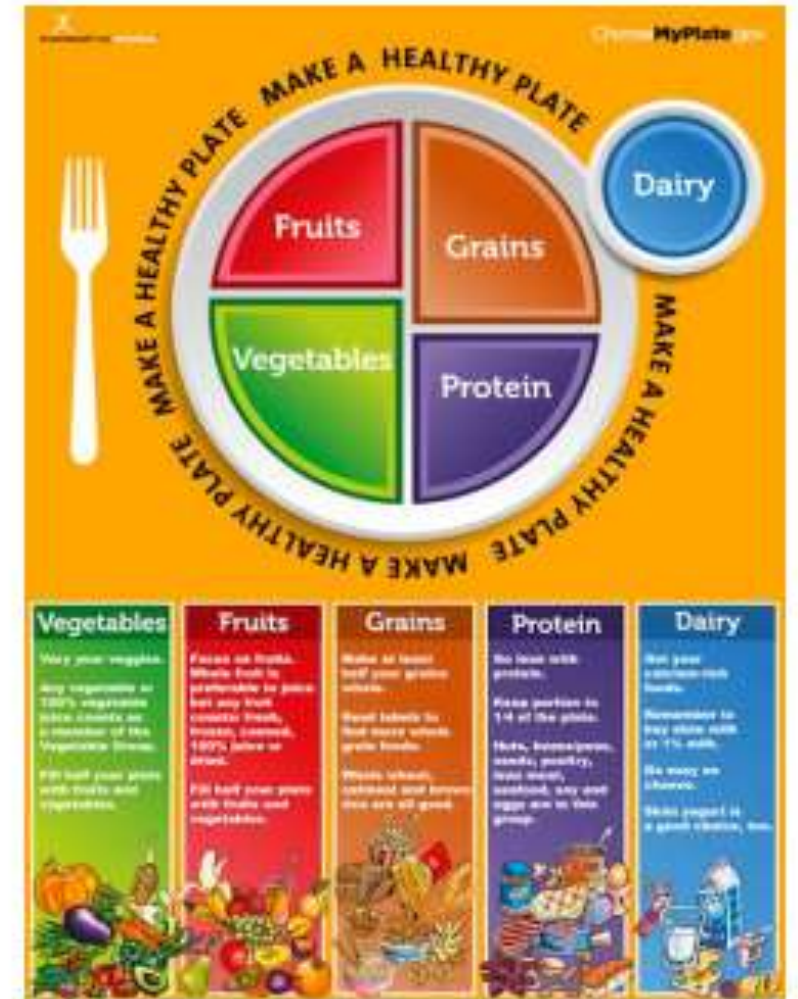
Hat and gloves or sun hat.

Children will be offered fruit and milk each day at snack time.



# Lunch

- Our school meals are well balanced, healthy and cooked on the premises in a well- equipped kitchen. A varied menu is provided each day.
- All children in Reception eat together in the Key Stage 1 hall supervised by Midday staff.
- Once the children have finished eating, they go outside to play in our outdoor area.
- All Reception and KS1 pupils are entitled to eat a free school meal.



# Healthy Eating

A healthy balanced diet for children

Food group	Examples of food included	Main nutrients provided	Recommended serving
Fruit and vegetables	Fresh, frozen, canned, and dried fruit, vegetables, and pulses	Carotenoids (a form of vitamin A), vitamin C, zinc, iron, and fibre	At least 5 portions each day Provide a portion as part of each main meal (breakfast, lunch and tea) and with some snacks
Potatoes, bread, rice, pasta and other starchy carbohydrates	Bread, potatoes and sweet potatoes, starchy root vegetables, pasta, noodles, rice, other grains, breakfast cereals	Carbohydrate, fibre, B vitamins and iron	4 portions each day Provide a portion as part of each meal (breakfast, lunch and tea) and provide as part of at least one snack each day
Dairy and alternatives	Milk, cheese, yoghurt, fromage frais	Protein, calcium, and vitamin A	3 portions each day Provided as part of meals, snacks and drink
Beans, pulses, fish, eggs, meat and other proteins	Meat, poultry, fish, shellfish, eggs, beans, pulses, nuts	Protein, iron, zinc, omega 3 fatty acids, vitamins A and D	2 portions each day Provide a portion as part of lunch and tea (two to three portions for vegetarian children)

**If your child is having a packed lunch from home, please consider these before packing:**

- Children need a balanced diet covering the 4 main food groups
- Avoid foods and drinks high in salt, sugar and saturated fat
- Children should eat a variety of fruit and vegetables to access different vitamins and nutrients.

# Healthy Teeth



- Poor oral health can affect children and young people's ability to sleep, eat, speak, play and socialise with other children.
- Other impacts include pain, infections, poor diet, and impaired nutrition and growth.



# Pupil Premium

## How do I register?

- To check your child's eligibility is a very simple process as follows: By Telephone: **Cheshire East 0300 123 5012**
- Or Online: [https://www.cheshireeast.gov.uk/schools/free\\_school\\_meals.aspx](https://www.cheshireeast.gov.uk/schools/free_school_meals.aspx)
- Cheshire East will use the Government eligibility checker to confirm your entitlement and successful claims will commence immediately.



## Special Educational Needs and Disability (SEND)

**Our school aims to meet the special educational needs and disabilities of all children**

St Mary's is a welcoming school based on our shared Gospel values where we give witness to God's love, knowing that every child is embraced with the **love of Jesus** as they pray, **play** and **grow** together as friends.

Every child is unique and we are proud of our inclusive and supportive **learning** environment, where we celebrate each other's achievements. Children have the opportunity to reach their full potential as we guide them to become lifelong learners.

We all aspire to do the best we can within God's family, living Christian values and sharing spiritual links with those in our home, parish and wider community.

**Please contact the school's SENCo Mrs Hemming if you wish to discuss your child's individual special needs or disability.**



# SMART Club

Before/After School  
&  
Holiday Club



SMART Club operates from the blue mobile building on St Mary's KS2 playground, and is open before school, after school, and during the school holidays.

If you are interested in a place for your child, please leave your **name** and contact number with Mrs Keenan at the end of the session.

Please note:

SMART Club is very popular and spaces are limited, so there may be a waiting list. However, once we have your details, we'll do our best to meet your needs.

**smart@stmarysrc.cheshire.sch.uk**  
**07983 304425**



# Class Dojo

This is our main electronic form of communication with you  
We will invite you to join dojo via your email  
You **must** accept the invitation to sign up.

Download the app & familiarise yourself with the functions

See your child's learning throughout the year  
Communicate with us



Keep an eye out for our summer challenges to complete with your child!  
We would love to see photos too which you can add to your child's  
portfolio!



# School Building Fund

St. Mary's is a Catholic Voluntary Aided school and therefore a 10% contribution is required for building work and improvement for our school environment. This money is really important to us.

All parents with children attending this school are asked to make a voluntary contribution.

The suggested contribution is **£15 per child (29p per child per week!)**

However you are free to give more or less, your child will not be treated any differently, we are inclusive!

All information on how to pay is in the leaflet in your pack.



[https://www.cheshireeast.gov.uk/schools/schools\\_epayments/schools\\_epayments.aspx](https://www.cheshireeast.gov.uk/schools/schools_epayments/schools_epayments.aspx)



# St. Mary's Facebook



- Look at all the amazing things we do!

<https://www.facebook.com/stmarysrcrewe>

